



D'ANDREA MONO'D

PROMOTION

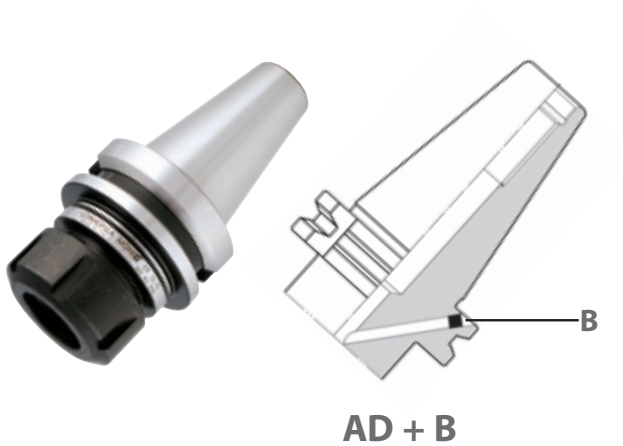
Valid as from 01/06/2016 till 31/12/2016



Quality, Precision, Strength

Integrated toolholders

The integrated MONOd' tool holders represent an ideal solution to equip any type of machine tool with HSK 63 and 100, DIN AD+B and BT AD+B base arbors, guaranteeing the benefits of a high quality and high precision, with a price that is highly competitive on the market. The MONOd' program includes ER collet chucks, Weldon end mill holders, Morse tapers, and tapping chucks.



Monod' Collet Chuck Holder

DIN 69893 HSK-A

ER-DIN 6499



- Supplied with coolant tube - without collets and clamping wrenches

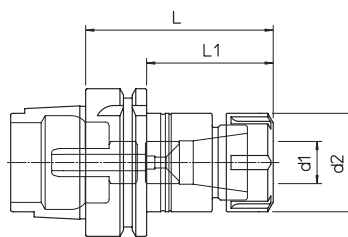


fig.1

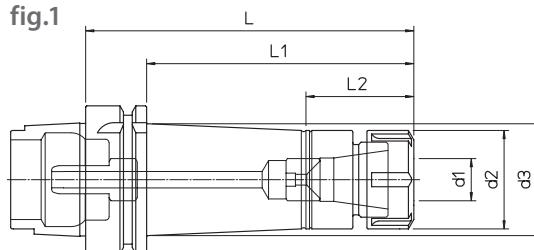


fig.2

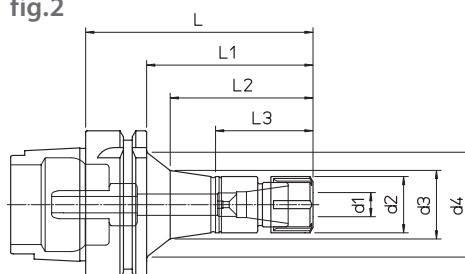


fig.3

4

HSK-A	REF.	CODE	TYPE	d1	d2	d3	d4	L	L1	L2	L3	fig.	Price €	Promo Price €
63	HSK-A63 ER16.80	71HСКА063ER1608	ER 16 M	0.5 ~ 10	22	32		80	54	41		1	120,75	49,93
	HSK-A63 ER16.120	71HСКА063ER1612				31		120	94			2	136,50	56,45
	HSK-A63 ER25.80	71HСКА063ER2508	ER 25	1 ~ 16	42	-		80	54	-		1	120,75	49,93
	HSK-A63 ER25.140	71HСКА063ER2514				47.5		140	114	46		2	141,75	58,62
	HSK-A63 ER32.90	71HСКА063ER3209	ER 32	2 ~ 20	50	-		90	64	-		1	120,75	49,93
	HSK-A63 ER32.160	71HСКА063ER3216				160		134	-	2		147,00	60,79	
100	HSK-A100 ER16.100	71HСКА100ER1610	ER 16 M	0.5 ~ 10	22	25	45	100	71	61	41.5	3	181,65	75,12
	HSK-A100 ER16.160	71HСКА100ER1616				34.5	44	160	131	126			203,70	84,24
	HSK-A100 ER25.100	71HСКА100ER2510	ER 25	1 ~ 16	42	45.5		100	71	47			186,90	77,29
	HSK-A100 ER25.160	71HСКА100ER2516				49.5		160	131				207,90	85,97
	HSK-A100 ER32.120	71HСКА100ER3212	ER 32	2 ~ 20	50	55		120	91	52		2	197,40	81,63
	HSK-A100 ER32.160	71HСКА100ER3216				56.5		160	131				214,20	88,58
	HSK-A100 ER40.120	71HСКА100ER4012	ER 40	3 ~ 26	63	71.5		120	91	60			212,10	87,71

Monod' WELDON Toolholder

DIN 69893 HSK-A

WD-DIN 1835-B

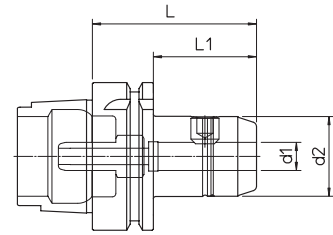


fig.1

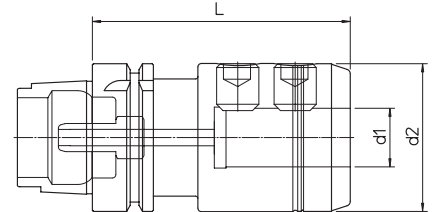


fig.2

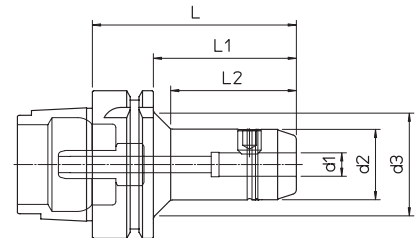


fig.3

- Supplied with coolant tube

HSK-A	REF.	CODE	d1	d2	d3	L	L1	L2	fig.	Price €	Promo Price €	
63	HSK-A63 WD06.60	71HSKA063WD0606	6	23	-	60	34	-	1	110,25	45,59	
	HSK-A63 WD08.65	71HSKA063WD0806	8	26		65	39			110,25	45,59	
	HSK-A63 WD10.70	71HSKA063WD1007	10	30		70	44			110,25	45,59	
	HSK-A63 WD12.70	71HSKA063WD1207	12	34		110,25	45,59					
	HSK-A63 WD16.80	71HSKA063WD1608	16	42		80	54			115,50	47,76	
	HSK-A63 WD20.80	71HSKA063WD2008	20	50		115,50	47,76					
	HSK-A63 WD25.110	71HSKA063WD2511	25	63		110	-			2	120,75	49,93
	HSK-A63 WD32.110	71HSKA063WD3211	32	70		120,75	49,93					
100	HSK-A100 WD10.90	71HSKA100WD1009	10	30	45	90	61	53.5	3	173,25	71,64	
	HSK-A100 WD12.100	71HSKA100WD1210	12	34		100	71	65.5		173,25	71,64	
	HSK-A100 WD14.100	71HSKA100WD1410	14	38				67.5		173,25	71,64	
	HSK-A100 WD16.100	71HSKA100WD1610	16	42	-	110	81	-	1	175,35	72,51	
	HSK-A100 WD18.110	71HSKA100WD1811	18	46						177,45	73,38	
	HSK-A100 WD20.110	71HSKA100WD2011	20	50						177,45	73,38	
	HSK-A100 WD25.120	71HSKA100WD2512	25	63						183,75	75,99	
	HSK-A100 WD32.120	71HSKA100WD3212	32	70						120	91	185,85
HSK-A100 WD40.120	71HSKA100WD4012	40	80	187,95	77,72							

Monod' DANDREA Mill Holder

DIN 69893 HSK-A

PF

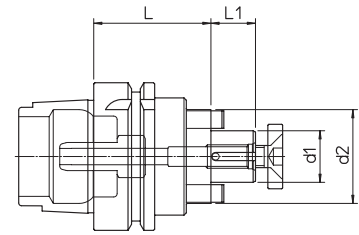


fig.1

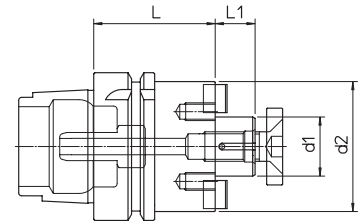
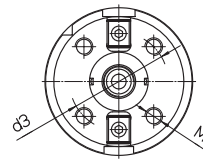


fig.2

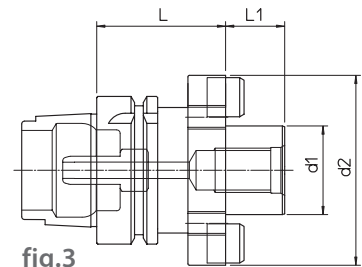
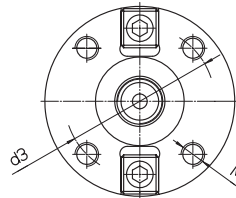


fig.3

- Supplied with coolant tube

6

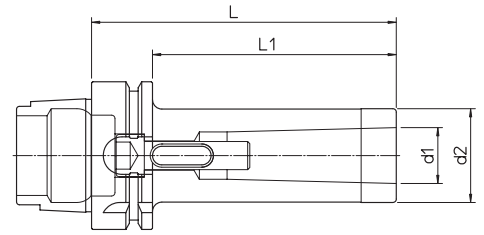
HSK-A	REF.	CODE	d1	d2	d3	M	L	L1	fig.	Price €	Promo Price €			
63	HSK-A63 PF16.50	71HSKA063PF1605	16	32	-	-	50	17	1	120,75	49,93			
	HSK-A63 PF22.50	71HSKA063PF2205	22	40				19		120,75	49,93			
	HSK-A63 PF27.55	71HSKA063PF2705	27	50			21	120,75		49,93				
	HSK-A63 PF32.60	71HSKA063PF3206	32	60			24	126,00		52,11				
100	HSK-A100 PF22.65	71HSKA100PF2265	22	40	-	-	65	19	1	174,30	72,08			
	HSK-A100 PF27.65	71HSKA100PF2765	27	50				21		185,85	76,86			
	HSK-A100 PF32.70	71HSKA100PF3270	32	60			24	191,10		79,03				
	HSK-A100 PF40.70	71HSKA100PF4070	40	88			66.7	M12		70	27	2	206,85	85,54
	HSK-A100 PF60.75	71HSKA100PF6075	60	128.5			101.6	M16		75	40	3	255,15	105,51

Monod'

Morse Taper Toolholder

DIN 69893 HSK-A

CM - DIN 228 AB



HSK-A	REF.	CODE	MORSE	d1	d2	L	L1	Price €	Promo Price €
63	HSK-A63 CM2.110 A-B	71HSKA063CMB211	2	17.780	32	110	84	168,00	69,47
	HSK-A63 CM3.130 A-B	71HSKA063CMB313	3	23.825	40	130	104	173,25	71,64
	HSK-A63 CM4.155 A-B	71HSKA063CMB415	4	31.267	48	155	129	194,25	80,33

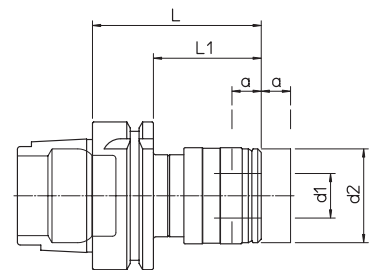
Monod'

Tapping Toolholder

DIN 69893 HSK-A

MS

7



HSK-A	REF.	CODE	d1	d2	L	L1	a	Price €	Promo Price €
63	HSK-A63 MS1 M3-12	71HSKA063M10312	19	39	72	46	7.5	380,10	157,18
	HSK-A63 MS2 M8-20	71HSKA063M20820	31	60	110	84	10	438,90	181,50

Monod' Collet Chuck Holder

DIN 69871 AD-B40

ER - DIN 6499

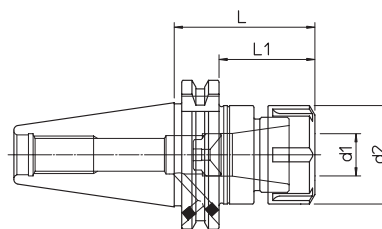


fig.1

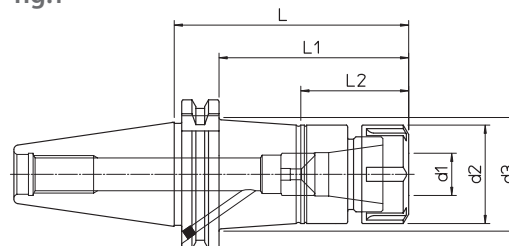


fig.2

- Supplied without collets and clamping wrenches

8

DIN	REF.	CODE	TYPE	d1	d2	d3	L	L1	L2	fig.	Price €	Promo Price €
40	DIN69871-AD+B40 ER16.60	71DIN-B40ER1606	ER 16 M	0.5 ~ 10	22	-	60	41	-	1	89,25	36,91
	DIN69871-AD+B40 ER16.100	71DIN-B40ER1610				29.5	100	81	41	2	108,15	44,72
	DIN69871-AD+B40 ER16.160	71DIN-B40ER1616				38	160	141	2	129,15	53,41	
	DIN69871-AD+B40 ER25.60	71DIN-B40ER2506	ER 25	1 ~ 16	42	-	60	41	-	1	89,25	36,91
	DIN69871-AD+B40 ER25.100	71DIN-B40ER2510				47	100	81	46	2	108,15	44,72
	DIN69871-AD+B40 ER25.160	71DIN-B40ER2516				50	160	141	2	129,15	53,41	
	DIN69871-AD+B40 ER32.70	71DIN-B40ER3207	ER 32	2 ~ 20	50	-	70	51	-	1	89,25	36,91
	DIN69871-AD+B40 ER32.110	71DIN-B40ER3211				110	91	108,15	44,72			
	DIN69871-AD+B40 ER32.160	71DIN-B40ER3216				160	141	129,15	53,41			
	DIN69871-AD+B40 ER40.80	71DIN-B40ER4008	ER 40	3 ~ 26	63	-	80	61	-	1	96,60	39,95
	DIN69871-AD+B40 ER40.120	71DIN-B40ER4012				120	101	116,55	48,20			
	DIN69871-AD+B40 ER40.160	71DIN-B40ER4016				160	141	139,65	57,75			

Monod' Collet Chuck Holder

DIN 69871 AD-B50

ER - DIN 6499

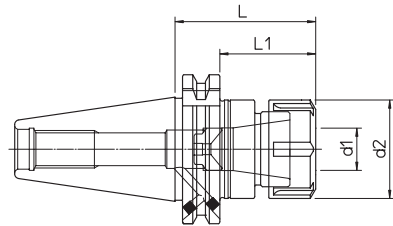


fig.1

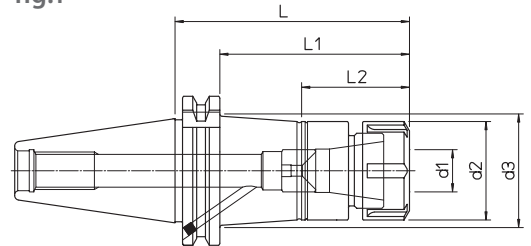
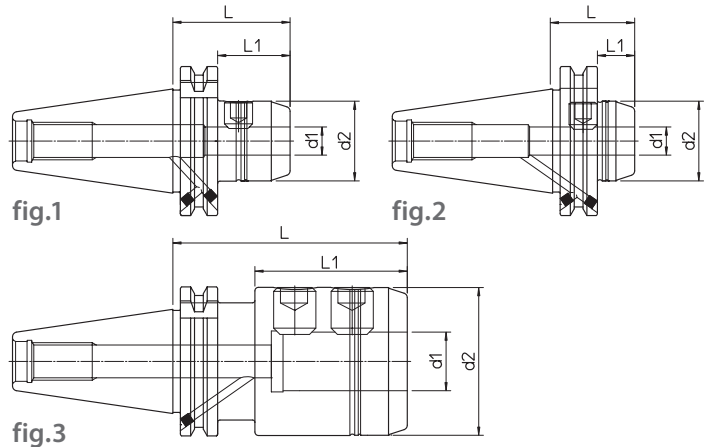


fig.2

- Supplied without collets and clamping wrenches

DIN	REF.	CODE	TYPE	d1	d2	d3	L	L1	L2	fig.	Price €	Promo Price €
50	DIN69871-AD+B50 ER16.100	71DIN-B50ER1610	ER 16 M	0.5 ~ 10	22	29.5	100	81	41	2	142,80	59,05
	DIN69871-AD+B50 ER16.160	71DIN-B50ER1616				32.5	160	141			172,20	71,21
	DIN69871-AD+B50 ER25.70	71DIN-B50ER2507	ER 25	1 ~ 16	42	-	70	51	-	2	124,95	51,67
	DIN69871-AD+B50 ER25.110	71DIN-B50ER2511				48	110	91	145,95		60,36	
	DIN69871-AD+B50 ER25.160	71DIN-B50ER2516				50	160	141	172,20		71,21	
	DIN69871-AD+B50 ER32.70	71DIN-B50ER3207	ER 32	2 ~ 20	50	-	70	51	-	2	124,95	51,67
	DIN69871-AD+B50 ER32.110	71DIN-B50ER3211				55	110	91	145,95		60,36	
	DIN69871-AD+B50 ER32.160	71DIN-B50ER3216				57.5	160	141	172,20		71,21	
	DIN69871-AD+B50 ER40.100	71DIN-B50ER4010	ER 40	3 ~ 26	63	65	100	81	55	2	145,95	60,36
	DIN69871-AD+B50 ER40.160	71DIN-B50ER4016				70	160	141			182,70	75,55



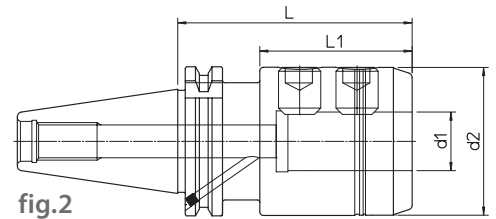
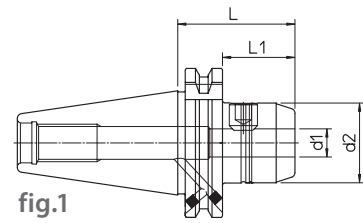
10

DIN	REF.	CODE	d1 ^{H5}	d2	L	L1	fig.	Price €	Promo Price €	
40	DIN69871-AD+B40 WD06.50	71DIN-B40WD0605	6	23	50	31	1	81,90	33,87	
	DIN69871-AD+B40 WD06.110	71DIN-B40WD0611			110	91		100,80	41,68	
	DIN69871-AD+B40 WD06.160	71DIN-B40WD0616			160	141		138,60	57,32	
	DIN69871-AD+B40 WD08.50	71DIN-B40WD0805	8	26	50	31	1	75,60	31,26	
	DIN69871-AD+B40 WD08.110	71DIN-B40WD0811			110	91		94,50	39,08	
	DIN69871-AD+B40 WD08.160	71DIN-B40WD0816			160	141		130,20	53,84	
	DIN69871-AD+B40 WD10.50	71DIN-B40WD1005	10	30	50	31	1	75,60	31,26	
	DIN69871-AD+B40 WD10.110	71DIN-B40WD1011			110	91		94,50	39,08	
	DIN69871-AD+B40 WD10.160	71DIN-B40WD1016			160	141		130,20	53,84	
	DIN69871-AD+B40 WD12.35	71DIN-B40WD1203	12	34	35	16	2	82,95	34,30	
	DIN69871-AD+B40 WD12.50	71DIN-B40WD1205			50	31	1	75,60	31,26	
	DIN69871-AD+B40 WD12.110	71DIN-B40WD1211			110	91		94,50	39,08	
	DIN69871-AD+B40 WD12.160	71DIN-B40WD1216	14	38	160	141	1	130,20	53,84	
	DIN69871-AD+B40 WD14.50	71DIN-B40WD1405			50	31	1	81,90	33,87	
	DIN69871-AD+B40 WD14.110	71DIN-B40WD1411			110	91		100,80	41,68	
	DIN69871-AD+B40 WD16.35	71DIN-B40WD1603	16	42	35	16	2	82,95	34,30	
	DIN69871-AD+B40 WD16.63	71DIN-B40WD1606			63	44	1	75,60	31,26	
	DIN69871-AD+B40 WD16.110	71DIN-B40WD1611			110	91		94,50	39,08	
	DIN69871-AD+B40 WD16.160	71DIN-B40WD1616	18	46	160	141	1	130,20	53,84	
	DIN69871-AD+B40 WD18.63	71DIN-B40WD1806			63	44		1	81,90	33,87
	DIN69871-AD+B40 WD18.110	71DIN-B40WD1811			110	91			100,80	41,68
	DIN69871-AD+B40 WD20.35	71DIN-B40WD2003	20	50	44	35	16	2	82,95	34,30
	DIN69871-AD+B40 WD20.63	71DIN-B40WD2006			63	44	1	75,60	31,26	
	DIN69871-AD+B40 WD20.110	71DIN-B40WD2011			110	91		94,50	39,08	
DIN69871-AD+B40 WD20.160	71DIN-B40WD2016	25	63	160	141	1	130,20	53,84		
DIN69871-AD+B40 WD25.35	71DIN-B40WD2503			44	35		16	2	82,95	34,30
DIN69871-AD+B40 WD25.100	71DIN-B40WD2510			100	65		3	92,40	38,21	
DIN69871-AD+B40 WD25.160	71DIN-B40WD2516	160	125	130,20	53,84					
DIN69871-AD+B40 WD32.100	71DIN-B40WD3210	32	70	100	65	3	100,80	41,68		
DIN69871-AD+B40 WD32.160	71DIN-B40WD3216			160	125		141,75	58,62		

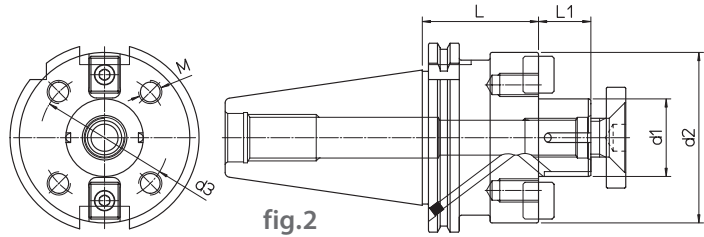
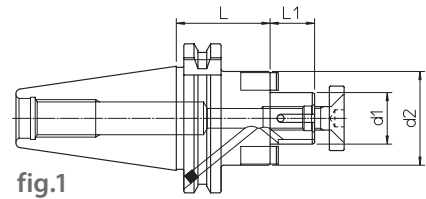
Monod' WELDON Toolholder

DIN 69871 AD+B50

WD - DIN 1835-B



DIN	REF.	CODE	d ₁ ^{H5}	d ₂	L	L ₁	fig.	Price €	Promo Price €
50	DIN69871-AD+B50 WD06.63	71DIN-B50WD0606	6	23	63	44	1	119,70	49,50
	DIN69871-AD+B50 WD06.110	71DIN-B50WD0611			110	91		149,10	61,66
	DIN69871-AD+B50 WD06.160	71DIN-B50WD0616			160	141		191,10	79,03
	DIN69871-AD+B50 WD08.63	71DIN-B50WD0806	8	26	63	44		113,40	46,89
	DIN69871-AD+B50 WD08.110	71DIN-B50WD0811			110	91		141,75	58,62
	DIN69871-AD+B50 WD08.160	71DIN-B50WD0816			160	141		183,75	75,99
	DIN69871-AD+B50 WD10.63	71DIN-B50WD1006	10	30	63	44		113,40	46,89
	DIN69871-AD+B50 WD10.110	71DIN-B50WD1011			110	91		141,75	58,62
	DIN69871-AD+B50 WD10.160	71DIN-B50WD1016			160	141		183,75	75,99
	DIN69871-AD+B50 WD12.63	71DIN-B50WD1206	12	34	63	44		113,40	46,89
	DIN69871-AD+B50 WD12.110	71DIN-B50WD1211			110	91		141,75	58,62
	DIN69871-AD+B50 WD12.160	71DIN-B50WD1216			160	141		183,75	75,99
	DIN69871-AD+B50 WD14.63	71DIN-B50WD1406	14	38	63	44		119,70	49,50
	DIN69871-AD+B50 WD14.110	71DIN-B50WD1411			110	91		149,10	61,66
	DIN69871-AD+B50 WD16.63	71DIN-B50WD1606	16	42	63	44		113,40	46,89
	DIN69871-AD+B50 WD16.110	71DIN-B50WD1611			110	91		141,75	58,62
	DIN69871-AD+B50 WD16.160	71DIN-B50WD1616			160	141		183,75	75,99
	DIN69871-AD+B50 WD18.63	71DIN-B50WD1806	18	46	63	44		119,70	49,50
	DIN69871-AD+B50 WD18.110	71DIN-B50WD1811			110	91		149,10	61,66
	DIN69871-AD+B50 WD20.63	71DIN-B50WD2006	20	50	63	44		113,40	46,89
	DIN69871-AD+B50 WD20.110	71DIN-B50WD2011			110	91		141,75	58,62
	DIN69871-AD+B50 WD20.160	71DIN-B50WD2016			160	141		183,75	75,99
	DIN69871-AD+B50 WD25.80	71DIN-B50WD2508	25	63	80	61		128,10	52,97
	DIN69871-AD+B50 WD25.110	71DIN-B50WD2511			110	91		159,60	66,00
DIN69871-AD+B50 WD25.160	71DIN-B50WD2516	160			141	201,60	83,37		
DIN69871-AD+B50 WD32.100	71DIN-B50WD3210	32	70	100	81	142,80	59,05		
DIN69871-AD+B50 WD32.160	71DIN-B50WD3216			160	141	201,60	83,37		
DIN69871-AD+B50 WD40.100	71DIN-B50WD4010	40	80	100	81	149,10	61,66		
DIN69871-AD+B50 WD40.160	71DIN-B50WD4016			160	141	210,00	86,84		



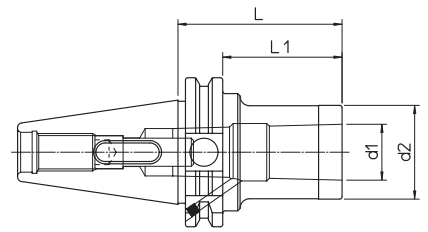
12

DIN	REF.	CODE	d ₁	d ₂	d ₃	M	L	L ₁	fig.	Price €	Promo Price €
40	DIN69871-AD+B40 PF16.35	71DIN-B40PF1603	16	32	-	-	35	17	1	89,25	36,91
	DIN69871-AD+B40 PF16.110	71DIN-B40PF1611					110			114,45	47,33
	DIN69871-AD+B40 PF16.160	71DIN-B40PF1616					160			150,15	62,09
	DIN69871-AD+B40 PF22.40	71DIN-B40PF2204	22	40			40	19		89,25	36,91
	DIN69871-AD+B40 PF22.110	71DIN-B40PF2211					110			114,45	47,33
	DIN69871-AD+B40 PF22.160	71DIN-B40PF2216					160			150,15	62,09
	DIN69871-AD+B40 PF27.45	71DIN-B40PF2704	27	50			45	21		89,25	36,91
	DIN69871-AD+B40 PF27.110	71DIN-B40PF2711					110			114,45	47,33
	DIN69871-AD+B40 PF27.160	71DIN-B40PF2716					160			150,15	62,09
	DIN69871-AD+B40 PF32.50	71DIN-B40PF3205	32	60			50	24		98,70	40,82
	DIN69871-AD+B40 PF32.110	71DIN-B40PF3211					110			130,20	53,84
	DIN69871-AD+B40 PF40.55	71DIN-B40PF4005	40	70			55	27		114,45	47,33
50	DIN69871-AD+B50 PF16.40	71DIN-B50PF1604	16	32	40	17	124,95	51,67			
	DIN69871-AD+B50 PF16.110	71DIN-B50PF1611			110		157,50	65,13			
	DIN69871-AD+B50 PF16.160	71DIN-B50PF1616			160		199,50	82,50			
	DIN69871-AD+B50 PF22.45	71DIN-B50PF2204	22	40	45	19	124,95	51,67			
	DIN69871-AD+B50 PF22.110	71DIN-B50PF2211			110		157,50	65,13			
	DIN69871-AD+B50 PF22.160	71DIN-B50PF2216			160		199,50	82,50			
	DIN69871-AD+B50 PF27.50	71DIN-B50PF2705	27	50	50	21	124,95	51,67			
	DIN69871-AD+B50 PF27.110	71DIN-B50PF2711			110		157,50	65,13			
	DIN69871-AD+B50 PF27.160	71DIN-B50PF2716			160		199,50	82,50			
	DIN69871-AD+B50 PF32.55	71DIN-B50PF3205	32	60	55	24	134,40	55,58			
	DIN69871-AD+B50 PF32.120	71DIN-B50PF3212			120		168,00	69,47			
	DIN69871-AD+B50 PF40.60	71DIN-B50PF4006	40	88	66.7	M12	60	27	136,50	56,45	
	DIN69871-AD+B50 PF40.120	71DIN-B50PF4012					120		173,25	71,64	
	DIN69871-AD+B50 PF60.70	71DIN-B50PF6007					70		273,00	112,89	

Monod' Morse Taper Toolholder

DIN 69871 AD+B

CM - DIN 228 AB



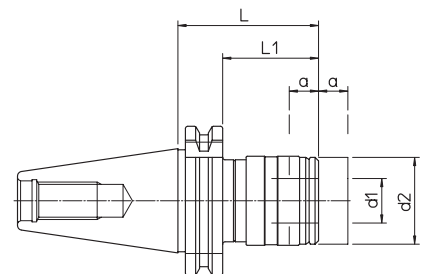
DIN	REF.	CODE	MORSE	d1	d2	L	L1	Price €	Promo Price €
40	DIN69871-AD+B40 CM2.50 A-B	71DIN-B40CMB205	2	17.780	32	50	31	113,40	46,89
	DIN69871-AD+B40 CM2.125 A-B	71DIN-B40CMB212				125	106	138,60	57,32
	DIN69871-AD+B40 CM3.70 A-B	71DIN-B40CMB307	3	23.825	40	51	119,70	49,50	
	DIN69871-AD+B40 CM3.140 A-B	71DIN-B40CMB314			42	140	121	145,95	60,36
50	DIN69871-AD+B50 CM2.60 A-B	71DIN-B50CMB206	2	17.780	32	60	41	140,70	58,18
	DIN69871-AD+B50 CM2.125 A-B	71DIN-B50CMB212				125	106	176,40	72,95
	DIN69871-AD+B50 CM3.60 A-B	71DIN-B50CMB306	3	23.825	40	41	140,70	58,18	
	DIN69871-AD+B50 CM3.140 A-B	71DIN-B50CMB314			42	140	121	186,90	77,29
	DIN69871-AD+B50 CM4.80 A-B	71DIN-B50CMB408	4	31.267	48	80	61	152,25	62,96

13

Monod' Tapping Toolholder

DIN 69871 A

MS



DIN	REF.	CODE	d1	d2	L	L1	a	Price €	Promo Price €
40	DIN69871-A40 MS1 M3-12	71DIN-A40M10312	19	36	60	40.9	7.5	200,55	82,93
	DIN69871-A40 MS2 M8-20	71DIN-A40M20820	31	53	98	78.9	12.5	243,60	100,74
50	DIN69871-A50 MS1 M3-12	71DIN-A50M10312	19	38	62	42.9	7.5	287,70	118,97
	DIN69871-A50 MS2 M8-20	71DIN-A50M20820	31	53	84	64.9	12.5	320,25	132,43
	DIN69871-A50 MS3 M14-33	71DIN-A50M31433	48	78	139	119.9	20	483,00	199,74

Monod'

Collet Chuck Holder

MAS 403 BT40 AD+B

ER - DIN 6499

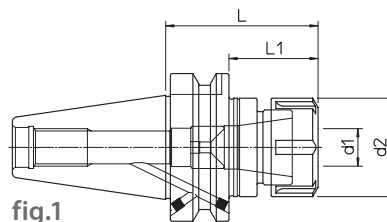


fig.1

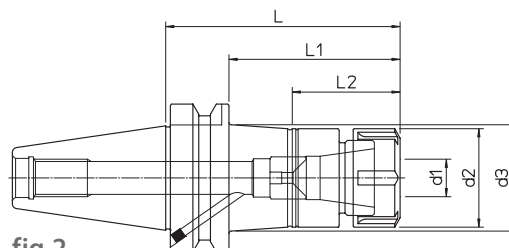


fig.2

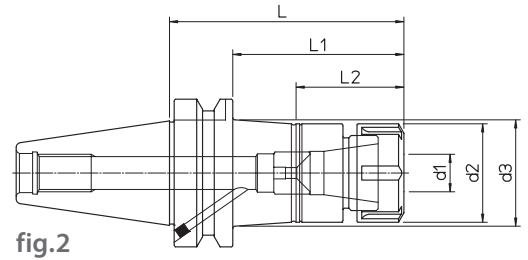
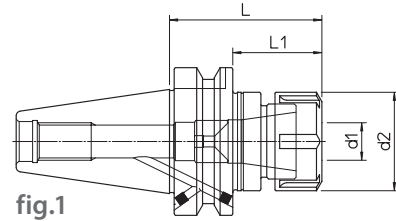
- Supplied without collets and clamping wrenches

BT	REF.	CODE	TYPE	d1	d2	d3	L	L1	L2	fig.	Price €	Promo Price €
40	MAS403 BT40-AD+B ER16.60	71MBT-B40ER1606	ER 16 M	0.5 ~ 10	22	-	60	33	-	1	89,25	36,91
	MAS403 BT40-AD+B ER16.100	71MBT-B40ER1610				28	100	73	41	2	108,15	44,72
	MAS403 BT40-AD+B ER16.160	71MBT-B40ER1616				36.5	160	133			129,15	53,41
	MAS403 BT40-AD+B ER25.65	71MBT-B40ER2506	ER 25	1 ~ 16	42	-	65	38	-	1	89,25	36,91
	MAS403 BT40-AD+B ER25.100	71MBT-B40ER2510				45.5	100	73	46	2	108,15	44,72
	MAS403 BT40-AD+B ER25.160	71MBT-B40ER2516				49.5	160	133			129,15	53,41
	MAS403 BT40-AD+B ER32.70	71MBT-B40ER3207	ER 32	2 ~ 20	50	-	70	43	-	1	89,25	36,91
	MAS403 BT40-AD+B ER32.110	71MBT-B40ER3211				110	83	108,15	44,72			
	MAS403 BT40-AD+B ER32.160	71MBT-B40ER3216				160	133	129,15	53,41			
	MAS403 BT40-AD+B ER40.80	71MBT-B40ER4008	ER 40	3 ~ 26	63	-	80	53	-	1	96,60	39,95
	MAS403 BT40-AD+B ER40.120	71MBT-B40ER4012				120	93	116,55	48,20			
	MAS403 BT40-AD+B ER40.160	71MBT-B40ER4016				160	133	139,65	57,75			

Monod' Collet Chuck Holder

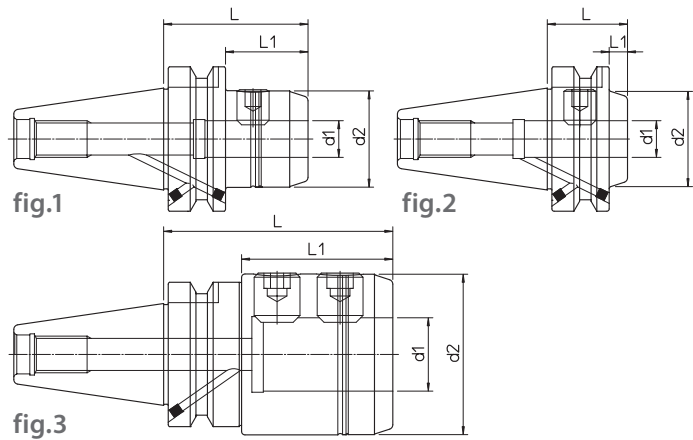
MAS 403 BT50 AD+B

ER - DIN 6499



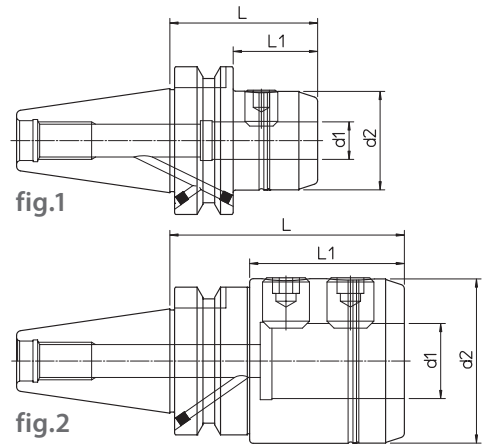
- Supplied without collets and clamping wrenches

BT	REF.	CODE	TYPE	d1	d2	d3	L	L1	L2	fig.	Price €	Promo Price €
50	MAS403 BT50-AD+B ER16.100	71MBT-B50ER1610	ER 16 M	0.5 ~ 10	22	26.5	100	62	41	2	142,80	59,05
	MAS403 BT50-AD+B ER16.160	71MBT-B50ER1616				31	160	122			172,20	71,21
	MAS403 BT50-AD+B ER25.75	71MBT-B50ER2507	ER 25	1 ~ 16	42	-	75	37	-	1	124,95	51,67
	MAS403 BT50-AD+B ER25.110	71MBT-B50ER2511				45.5	110	72	46	2	145,95	60,36
	MAS403 BT50-AD+B ER25.160	71MBT-B50ER2516				48.5	160	122			172,20	71,21
	MAS403 BT50-AD+B ER32.80	71MBT-B50ER3208	ER 32	2 ~ 20	50	-	80	42	-	1	124,95	51,67
	MAS403 BT50-AD+B ER32.110	71MBT-B50ER3211				52.5	110	72	52	2	145,95	60,36
	MAS403 BT50-AD+B ER32.160	71MBT-B50ER3216				56	160	122			172,20	71,21
	MAS403 BT50-AD+B ER40.100	71MBT-B50ER4010	ER 40	3 ~ 26	63	-	100	62	-	1	145,95	60,36
	MAS403 BT50-AD+B ER40.160	71MBT-B50ER4016				68.5	160	122	55	2	182,70	75,55

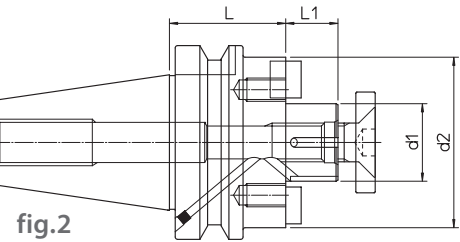
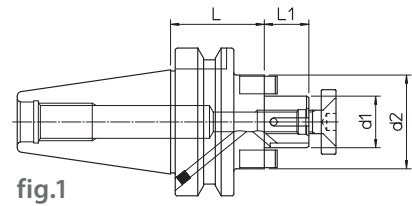
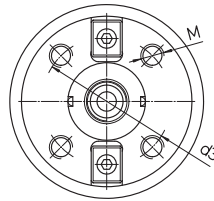


16

BT	REF.	CODE	d1 ^{H5}	d2	L	L1	fig.	Price €	Promo Price €
40	MAS403 BT40-AD+B WD06.50	71MBT-B40WD0605	6	23	50	23	1	81,90	33,87
	MAS403 BT40-AD+B WD06.110	71MBT-B40WD0611			110	83		100,80	41,68
	MAS403 BT40-AD+B WD06.160	71MBT-B40WD0616			160	133		138,60	57,32
	MAS403 BT40-AD+B WD08.50	71MBT-B40WD0805	8	26	50	23	1	75,60	31,26
	MAS403 BT40-AD+B WD08.110	71MBT-B40WD0811			110	83		94,50	39,08
	MAS403 BT40-AD+B WD08.160	71MBT-B40WD0816			160	133		130,20	53,84
	MAS403 BT40-AD+B WD10.56	71MBT-B40WD1005	10	30	56	29	1	75,60	31,26
	MAS403 BT40-AD+B WD10.110	71MBT-B40WD1011			110	83		94,50	39,08
	MAS403 BT40-AD+B WD10.160	71MBT-B40WD1016			160	133		130,20	53,84
	MAS403 BT40-AD+B WD12.35	71MBT-B40WD1203	12	34	35	8	2	82,95	34,30
	MAS403 BT40-AD+B WD12.56	71MBT-B40WD1205			56	29	1	75,60	31,26
	MAS403 BT40-AD+B WD12.110	71MBT-B40WD1211			110	83		94,50	39,08
	MAS403 BT40-AD+B WD12.160	71MBT-B40WD1216			160	133		130,20	53,84
	MAS403 BT40-AD+B WD14.56	71MBT-B40WD1405	14	38	56	29	1	81,90	33,87
	MAS403 BT40-AD+B WD14.110	71MBT-B40WD1411			110	83		100,80	41,68
	MAS403 BT40-AD+B WD16.35	71MBT-B40WD1603	16	42	35	8	2	82,95	34,30
	MAS403 BT40-AD+B WD16.63	71MBT-B40WD1606			63	36	1	75,60	31,26
	MAS403 BT40-AD+B WD16.110	71MBT-B40WD1611			110	83		94,50	39,08
	MAS403 BT40-AD+B WD16.160	71MBT-B40WD1616			160	133		130,20	53,84
	MAS403 BT40-AD+B WD18.63	71MBT-B40WD1806	18	46	63	36	1	81,90	33,87
	MAS403 BT40-AD+B WD18.110	71MBT-B40WD1811			110	83		100,80	41,68
	MAS403 BT40-AD+B WD20.35	71MBT-B40WD2003	20	50	35	8	2	82,95	34,30
	MAS403 BT40-AD+B WD20.63	71MBT-B40WD2006			63	36	1	75,60	31,26
	MAS403 BT40-AD+B WD20.110	71MBT-B40WD2011			110	83		94,50	39,08
	MAS403 BT40-AD+B WD20.160	71MBT-B40WD2016			160	133		130,20	53,84
	MAS403 BT40-AD+B WD25.35	71MBT-B40WD2503	25	63	35	8	2	82,95	34,30
	MAS403 BT40-AD+B WD25.100	71MBT-B40WD2510			100	73	3	92,40	38,21
	MAS403 BT40-AD+B WD25.160	71MBT-B40WD2516			160	133		130,20	53,84
	MAS403 BT40-AD+B WD32.100	71MBT-B40WD3210	32	70	100	67	3	100,80	41,68
	MAS403 BT40-AD+B WD32.160	71MBT-B40WD3216			160	127		141,75	58,62



BT	REF.	CODE	d1 ^{H5}	d2	L	L1	fig.	Price €	Promo Price €	
50	MAS403 BT50-AD+B WD06.63	71MBT-B50WD0606	6	23	63	25	1	119,70	49,50	
	MAS403 BT50-AD+B WD06.110	71MBT-B50WD0611			110	72		149,10	61,66	
	MAS403 BT50-AD+B WD06.160	71MBT-B50WD0616			160	122		191,10	79,03	
	MAS403 BT50-AD+B WD08.63	71MBT-B50WD0806	8	26	63	25		113,40	46,89	
	MAS403 BT50-AD+B WD08.110	71MBT-B50WD0811			110	72		141,75	58,62	
	MAS403 BT50-AD+B WD08.160	71MBT-B50WD0816			160	122		183,75	75,99	
	MAS403 BT50-AD+B WD10.70	71MBT-B50WD1007	10	30	70	32		113,40	46,89	
	MAS403 BT50-AD+B WD10.110	71MBT-B50WD1011			110	72		141,75	58,62	
	MAS403 BT50-AD+B WD10.160	71MBT-B50WD1016			160	122		183,75	75,99	
	MAS403 BT50-AD+B WD12.70	71MBT-B50WD1207	12	34	70	32		113,40	46,89	
	MAS403 BT50-AD+B WD12.110	71MBT-B50WD1211			110	72		141,75	58,62	
	MAS403 BT50-AD+B WD12.160	71MBT-B50WD1216			160	122		183,75	75,99	
	MAS403 BT50-AD+B WD14.70	71MBT-B50WD1407	14	38	70	32		119,70	49,50	
	MAS403 BT50-AD+B WD14.110	71MBT-B50WD1411			110	72		149,10	61,66	
	MAS403 BT50-AD+B WD16.80	71MBT-B50WD1608	16	42	80	42		113,40	46,89	
	MAS403 BT50-AD+B WD16.110	71MBT-B50WD1611			110	72		141,75	58,62	
	MAS403 BT50-AD+B WD16.160	71MBT-B50WD1616			160	122		183,75	75,99	
	MAS403 BT50-AD+B WD18.80	71MBT-B50WD1808	18	46	80	42		119,70	49,50	
	MAS403 BT50-AD+B WD18.110	71MBT-B50WD1811			110	72		149,10	61,66	
	MAS403 BT50-AD+B WD20.80	71MBT-B50WD2008	20	50	80	42		113,40	46,89	
	MAS403 BT50-AD+B WD20.110	71MBT-B50WD2011			110	72		141,75	58,62	
	MAS403 BT50-AD+B WD20.160	71MBT-B50WD2016			160	122		183,75	75,99	
	MAS403 BT50-AD+B WD25.100	71MBT-B50WD2510	25	63	100	62		2	128,10	52,97
	MAS403 BT50-AD+B WD25.125	71MBT-B50WD2512			125	87			159,60	66,00
MAS403 BT50-AD+B WD25.160	71MBT-B50WD2516	160			122	201,60	83,37			
MAS403 BT50-AD+B WD32.100	71MBT-B50WD3210	32	70	100	62	142,80	59,05			
MAS403 BT50-AD+B WD32.160	71MBT-B50WD3216			160	122	201,60	83,37			
MAS403 BT50-AD+B WD40.110	71MBT-B50WD4011	40	80	110	72	149,10	61,66			
MAS403 BT50-AD+B WD40.160	71MBT-B50WD4016			160	122	210,00	86,84			



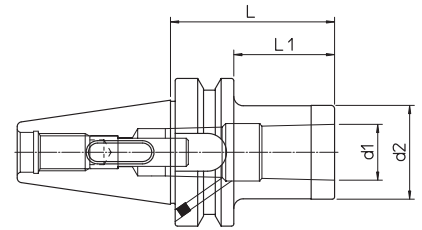
18

DIN	REF.	CODE	d ₁	d ₂	d ₃	M	L	L ₁	fig.	Price €	Promo Price €
40	MAS403 BT40-AD+B PF16.40	71MBT-B40PF1604	16	32	-	-	40	17	1	89,25	36,91
	MAS403 BT40-AD+B PF16.110	71MBT-B40PF1611					110			114,45	47,33
	MAS403 BT40-AD+B PF16.160	71MBT-B40PF1616					160	150,15		62,09	
	MAS403 BT40-AD+B PF22.40	71MBT-B40PF2204	22	40			40	19		89,25	36,91
	MAS403 BT40-AD+B PF22.110	71MBT-B40PF2211					110			114,45	47,33
	MAS403 BT40-AD+B PF22.160	71MBT-B40PF2216					160	150,15		62,09	
	MAS403 BT40-AD+B PF27.45	71MBT-B40PF2704	27	50			45	21		89,25	36,91
	MAS403 BT40-AD+B PF27.110	71MBT-B40PF2711					110			114,45	47,33
	MAS403 BT40-AD+B PF27.160	71MBT-B40PF2716					160	150,15		62,09	
	MAS403 BT40-AD+B PF32.50	71MBT-B40PF3205	32	60			50	24		98,70	40,82
	MAS403 BT40-AD+B PF32.110	71MBT-B40PF3211					110			130,20	53,84
	MAS403 BT40-AD+B PF40.55	71MBT-B40PF4005	40	70			55	27		114,45	47,33
50	MAS403 BT50-AD+B PF16.50	71MBT-B50PF1605	16	32	50	17	124,95	51,67			
	MAS403 BT50-AD+B PF16.110	71MBT-B50PF1611			110		157,50	65,13			
	MAS403 BT50-AD+B PF16.160	71MBT-B50PF1616			160	199,50	82,50				
	MAS403 BT50-AD+B PF22.50	71MBT-B50PF2205	22	40	50	19	124,95	51,67			
	MAS403 BT50-AD+B PF22.110	71MBT-B50PF2211			110		157,50	65,13			
	MAS403 BT50-AD+B PF22.160	71MBT-B50PF2216			160	199,50	82,50				
	MAS403 BT50-AD+B PF27.55	71MBT-B50PF2705	27	50	55	21	124,95	51,67			
	MAS403 BT50-AD+B PF27.110	71MBT-B50PF2711			110		157,50	65,13			
	MAS403 BT50-AD+B PF27.160	71MBT-B50PF2716			160	199,50	82,50				
	MAS403 BT50-AD+B PF32.55	71MBT-B50PF3205	32	60	55	24	134,40	55,58			
	MAS403 BT50-AD+B PF32.120	71MBT-B50PF3212			120		168,00	69,47			
	MAS403 BT50-AD+B PF40.60	71MBT-B50PF4006	40	88	66.7	M12	60	27	136,50	56,45	
	MAS403 BT50-AD+B PF40.120	71MBT-B50PF4012					120		173,25	71,64	
	MAS403 BT50-AD+B PF60.80	71MBT-B50PF6008	60	128.5	101.6	M16	80	40	273,00	112,89	

Monod' DANDREA Morse Taper Toolholder

MAS 403 BT AD+B

CM - DIN 228 AB



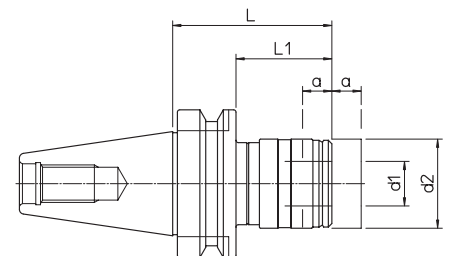
DIN	REF.	CODE	MORSE	d1	d2	L	L1	Price €	Promo Price €
40	MAS403 BT40-AD+B CM2.50 A-B	71MBT-B40CMB205	2	17.780	32	50	23	113,40	46,89
	MAS403 BT40-AD+B CM2.125 A-B	71MBT-B40CMB212				125	98	138,60	57,32
	MAS403 BT40-AD+B CM3.70 A-B	71MBT-B40CMB307	3	23.825	40	70	43	119,70	49,50
	MAS403 BT40-AD+B CM3.140 A-B	71MBT-B40CMB314				140	113	145,95	60,36
50	MAS403 BT50-AD+B CM2.60 A-B	71MBT-B50CMB206	2	17.780	32	60	22	140,70	58,18
	MAS403 BT50-AD+B CM2.125 A-B	71MBT-B50CMB212				125	87	176,40	72,95
	MAS403 BT50-AD+B CM3.60 A-B	71MBT-B50CMB306	3	23.825	40	60	22	140,70	58,18
	MAS403 BT50-AD+B CM3.145 A-B	71MBT-B50CMB314				145	107	186,90	77,29
	MAS403 BT50-AD+B CM4.80 A-B	71MBT-B50CMB408	4	31.267	48	80	42	152,25	62,96

19

Monod' DANDREA Tapping Toolholder

MAS 403 BT

MS



DIN	REF.	CODE	d1	d2	L	L1	a	Price €	Promo Price €
40	MAS403 BT40 MS1 M3-12	71MBT-40-M10312	19	36	67.5	40.5	7.5	200,55	82,93
	MAS403 BT40 MS2 M8-20	71MBT-40-M20820	31	53	94.5	67.5	12.5	243,60	100,74
50	MAS403 BT50 MS1 M3-12	71MBT-50-M10312	19	38	80	42	7.5	287,70	118,97
	MAS403 BT50 MS2 M8-20	71MBT-50-M20820	31	53	102.5	64.5	12.5	320,25	132,43
	MAS403 BT50 MS3 M14-33	71MBT-50-M31433	48	78	154.5	116.5	20	483,00	199,74



shaping your dreams

OSG BELUX

Avenue Lavoisier 1
B-1300 Z.I. Wavre - Nord
Belgium
Tel: +32 10 23 05 11
Fax: +32 10 23 05 31
info@osg-belgium.com

OSG NEDERLAND

Bedrijfsweg 5 - 3481 MG Harmelen
Postbus 50 - 3480 DB Harmelen
The Netherlands
Tel: +31 348 44 2764
Fax: +31 348 44 2144
info@osg-nl.com